



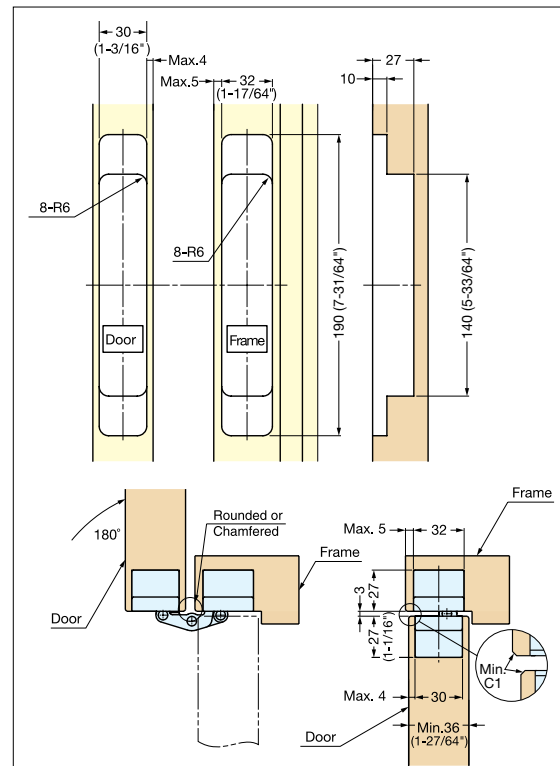
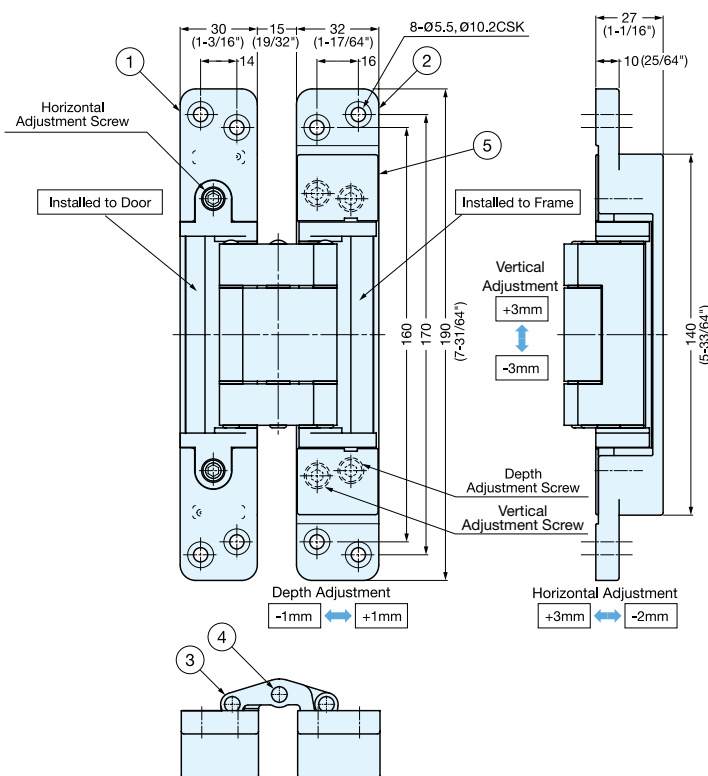
ALTRO

CH1903D

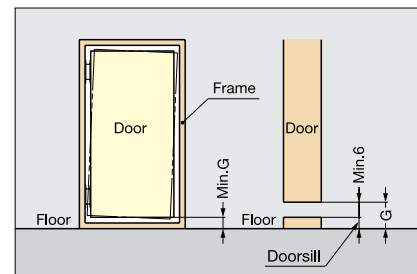
Concealed Hinge



- 3 WAY adjustment function allows vertical, horizontal, and depth adjustment after hinge installed.
- Easy installation and adjustment.
- Successfully passed 300,000 open/close private cycle tests.
- Door weight: Max. 70 kg (154 lbs)/2 pcs, 90 kg (200 lbs)/3 pcs
- Door Thickness: Min. 36 mm (1-7/16")
- Max. Door Size: H 2400 mm × W 900 mm (H 94-1/2" × W 35-7/16")



Bore Dimensions



To determine the door and frame dimension, (G) must be taken into account.
G = Min. 6 mm + doorsill